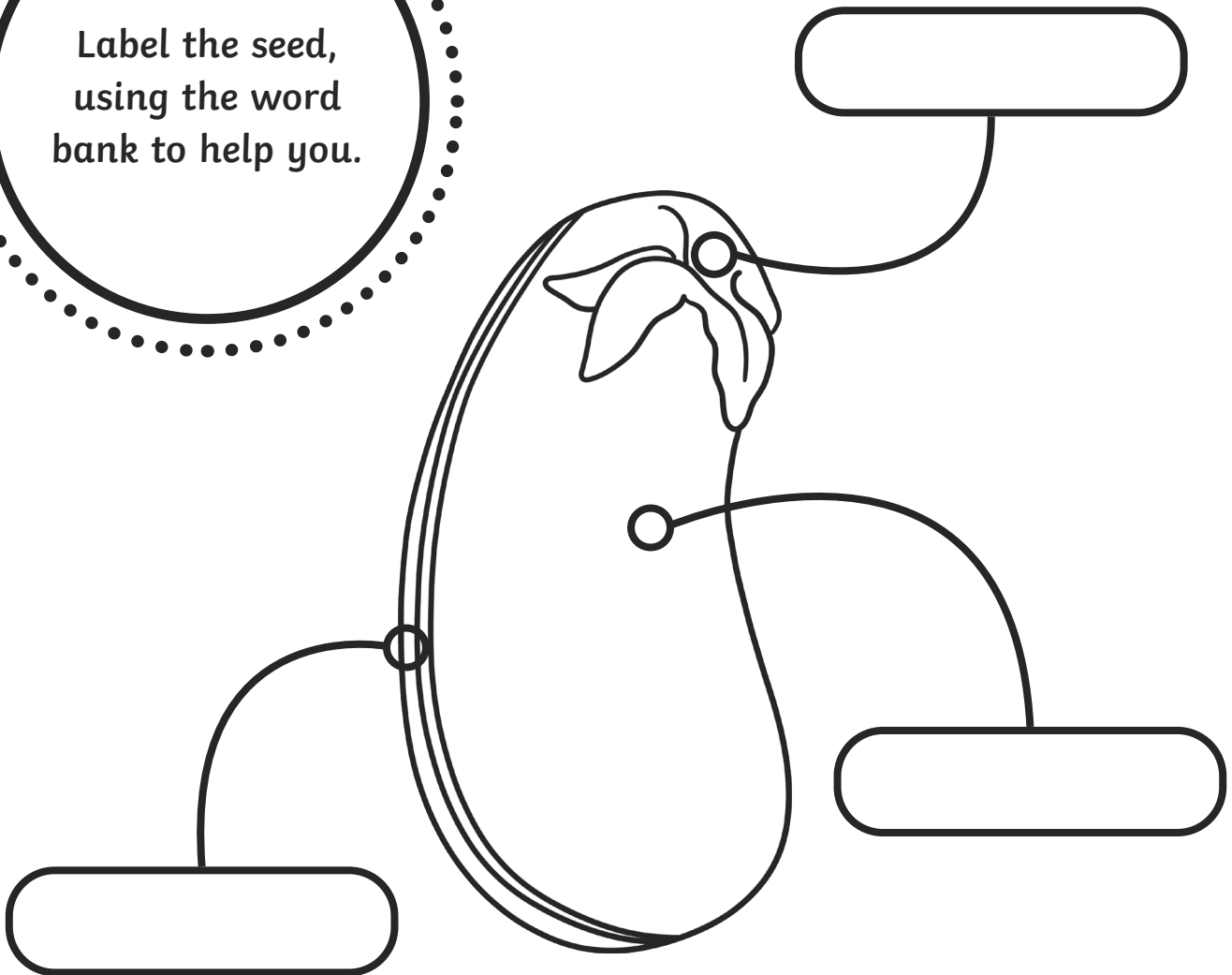


Inside a Seed

To look closely at the parts of a seed that will grow into a plant and explain how it will germinate.

Label the seed,
using the word
bank to help you.



Word Bank

seed coat

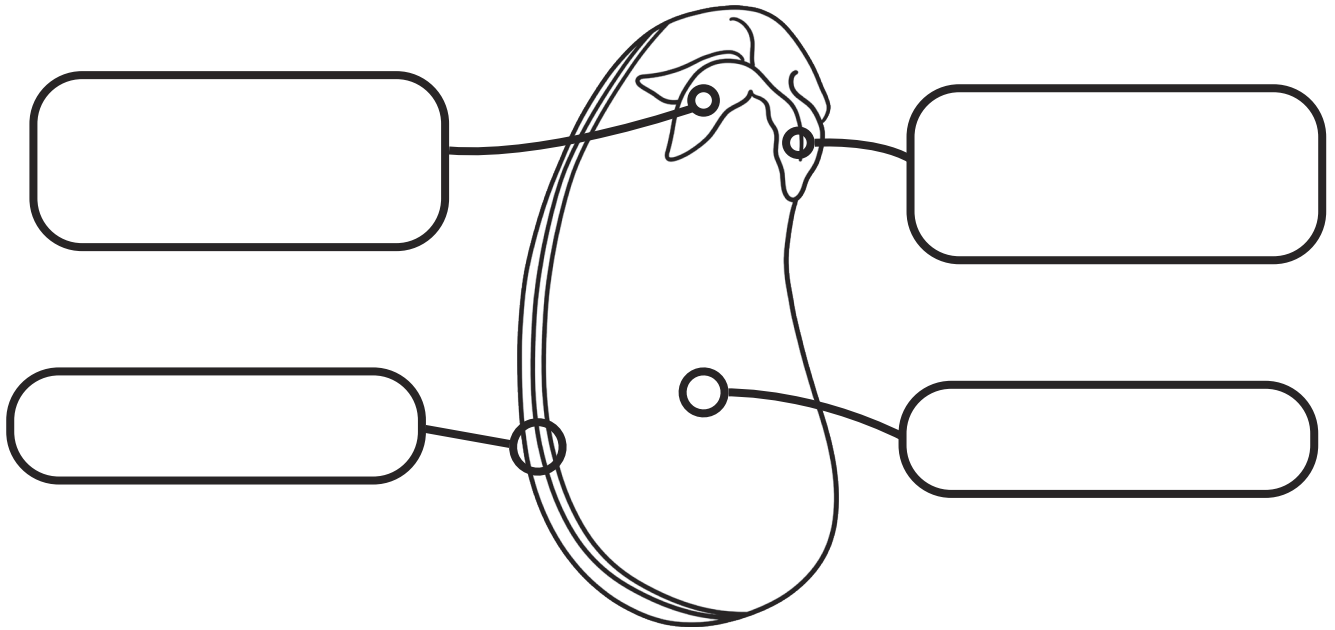
baby plant

food store

Inside a Seed

To look closely at the parts of a seed that will grow into a plant and explain how it will germinate.

Label the seed, using the word bank to help you.



Can you explain what each part of the seed does?

The seed coat _____

The food store _____

The baby plant _____

Word Bank

seed coat

will grow into
stem and leaves

will grow
into roots

food store

Inside a Seed

To look closely at the parts of a seed that will grow into a plant and explain how it will germinate.



Draw a diagram of the inside of a seed and label it to show the different parts, using the word bank to help you.

Word Bank

seed coat

will grow into
stem and leaves

will grow
into roots

food store

Can you explain what each part of the seed does?

Inside a Seed Answers

Label the seed,
using the word
bank to help you.

baby plant

food store

seed coat

Word Bank

seed coat

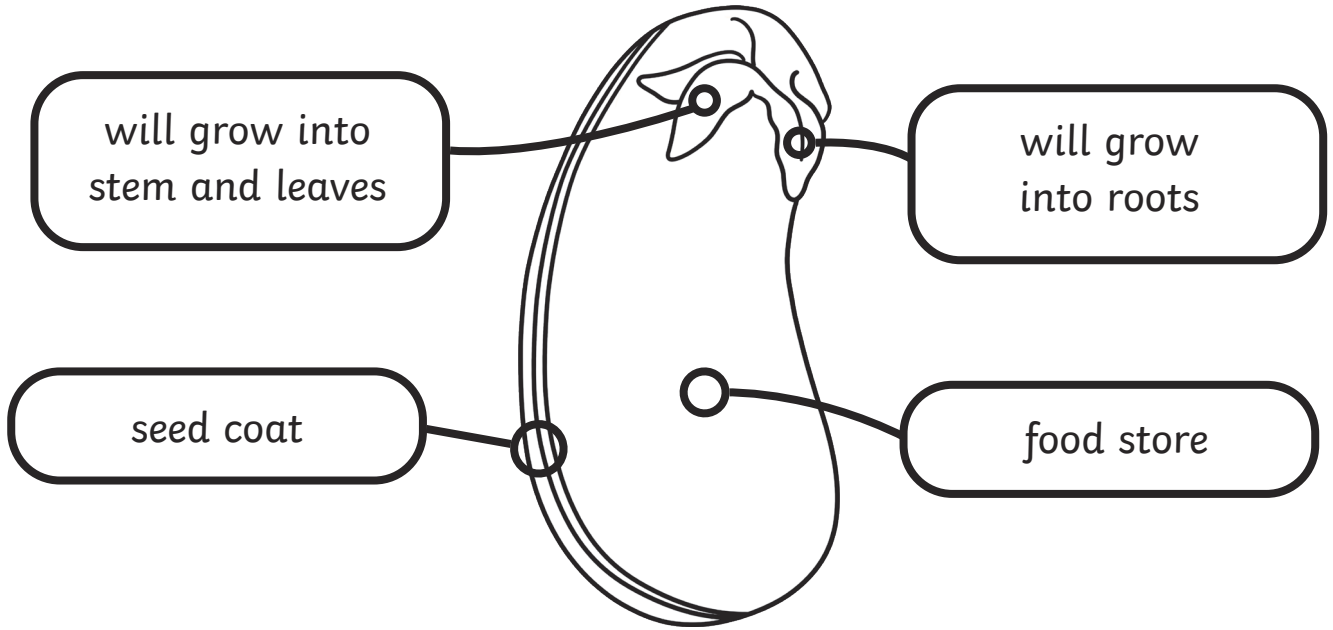
baby plant

food store

Inside a Seed Answers

To look closely at the parts of a seed that will grow into a plant and explain how it will germinate.

Label the seed, using the word bank to help you.



Can you explain what each part of the seed does?

The seed coat protects the seed from getting damaged.

The food store feeds the baby plant until it can make its own food.

The baby plant will grow into the roots and stem of the new plant.

Word Bank

seed coat

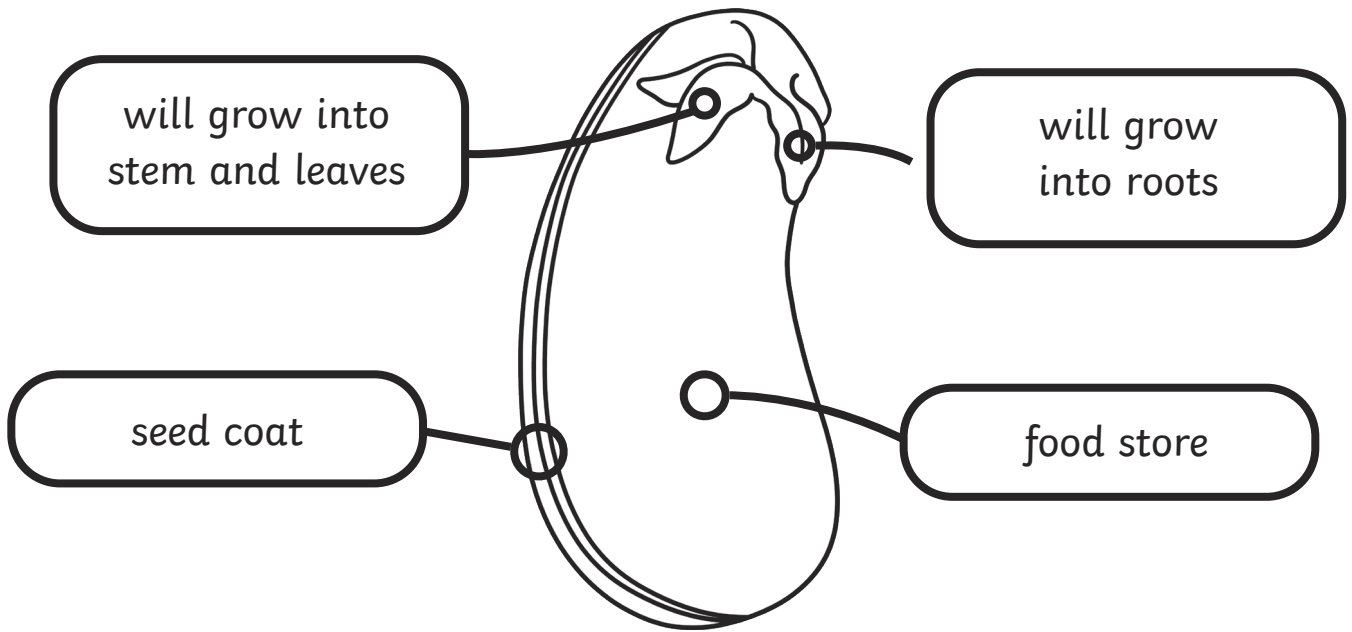
will grow into
stem and leaves

will grow
into roots

food store

Inside a Seed Answers

Draw a diagram of the inside of a seed and label it to show the different parts, using the word bank to help you.



Word Bank

seed coat

will grow into
stem and leaves

will grow
into roots

food store

Can you explain what each part of the seed does?

Seed coat: protects the seed from getting damaged.

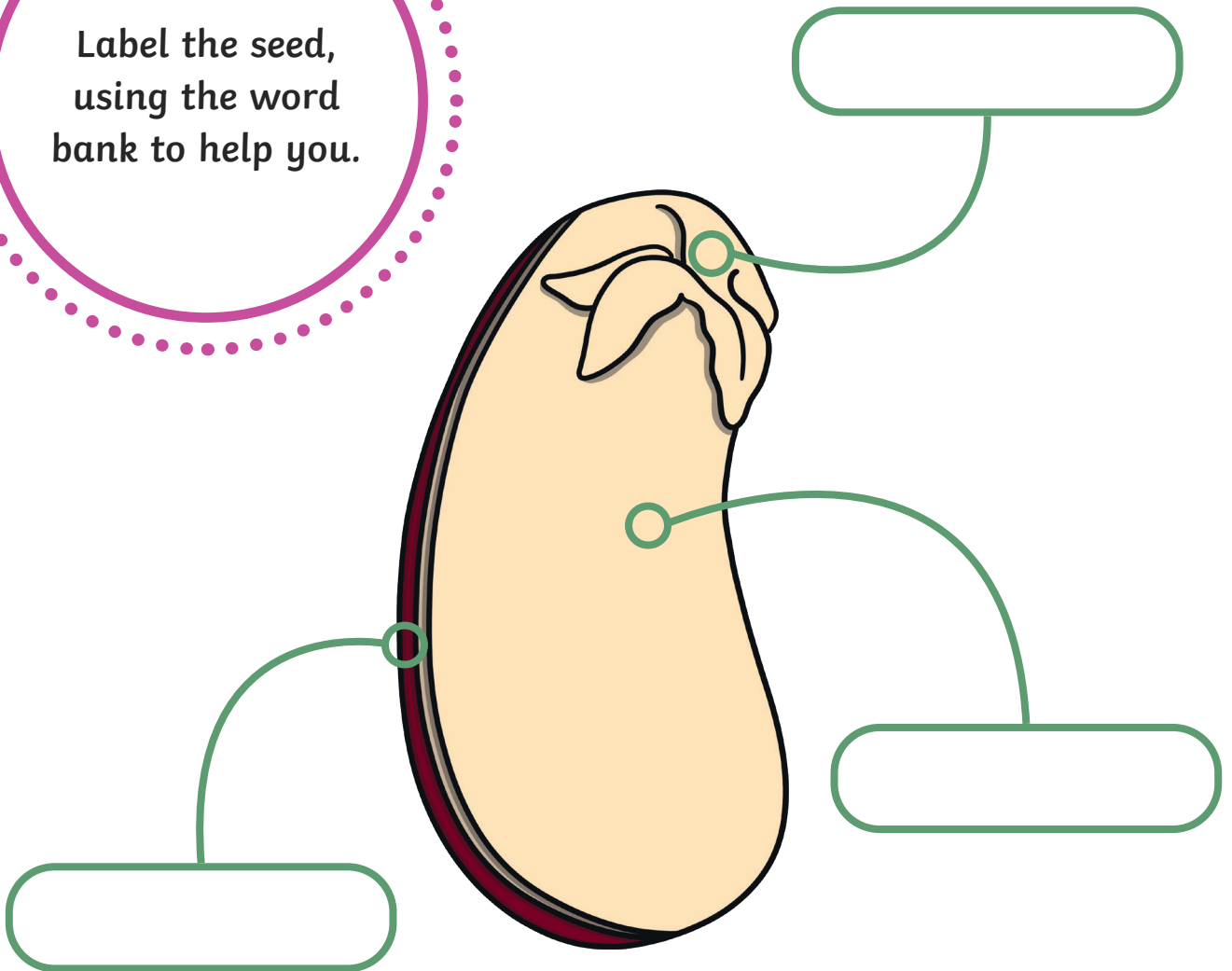
Food store: feeds the baby plant until it can make its own food.

Baby plant: will grow into the roots and stem of the new plant.

Inside a Seed

To look closely at the parts of a seed that will grow into a plant and explain how it will germinate.

Label the seed,
using the word
bank to help you.



Word Bank

seed coat

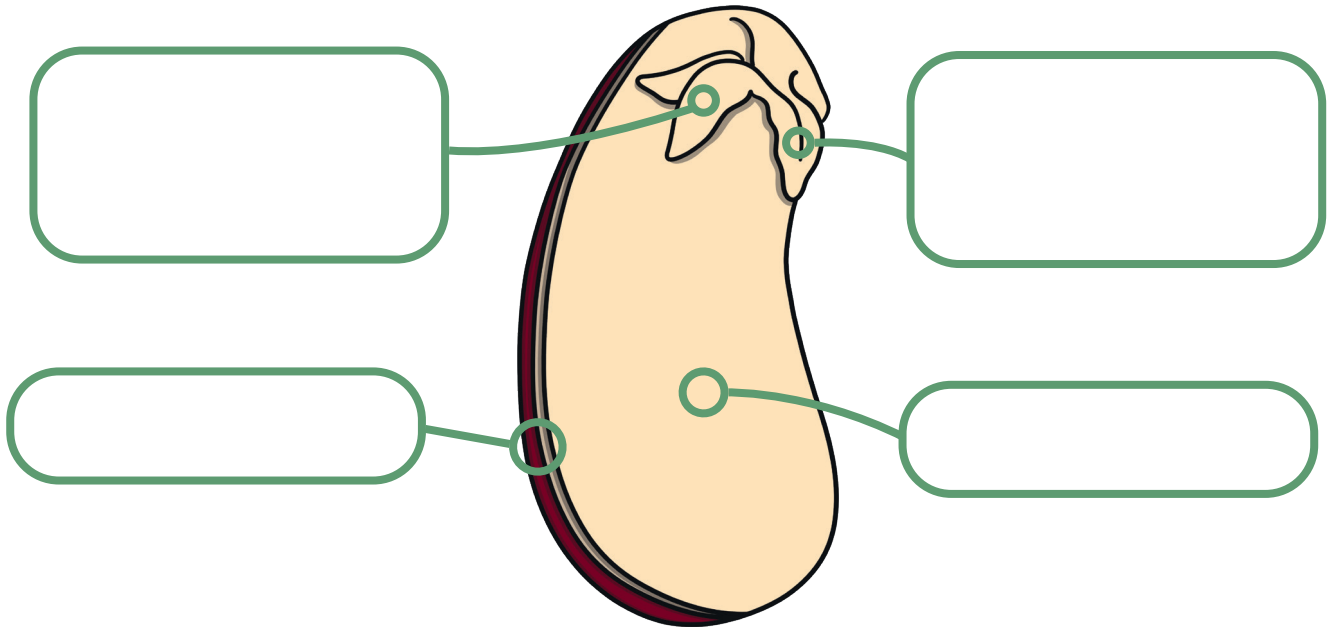
baby plant

food store

Inside a Seed

To look closely at the parts of a seed that will grow into a plant and explain how it will germinate.

Label the seed, using the word bank to help you.



Can you explain what each part of the seed does?

The seed coat _____

The food store _____

The baby plant _____

Word Bank

seed coat

will grow into
stem and leaves

will grow
into roots

food store

Inside a Seed

To look closely at the parts of a seed that will grow into a plant and explain how it will germinate.



Draw a diagram of the inside of a seed and label it to show the different parts, using the word bank to help you.

Word Bank

seed coat

will grow into
stem and leaves

will grow
into roots

food store

Can you explain what each part of the seed does?

Inside a Seed Answers

Label the seed,
using the word
bank to help you.

baby plant

food store

seed coat

Word Bank

seed coat

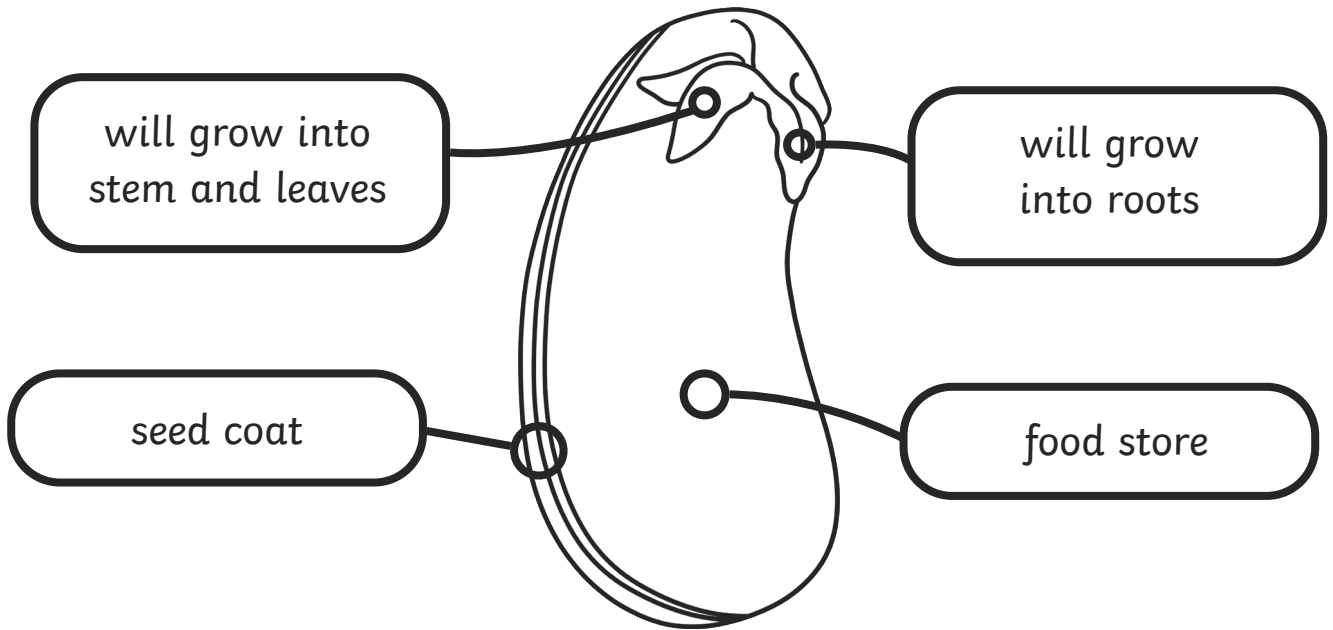
baby plant

food store

Inside a Seed Answers

To look closely at the parts of a seed that will grow into a plant and explain how it will germinate.

Label the seed, using the word bank to help you.



Can you explain what each part of the seed does?

The seed coat protects the seed from getting damaged.

The food store feeds the baby plant until it can make its own food.

The baby plant will grow into the roots and stem of the new plant.

Word Bank

seed coat

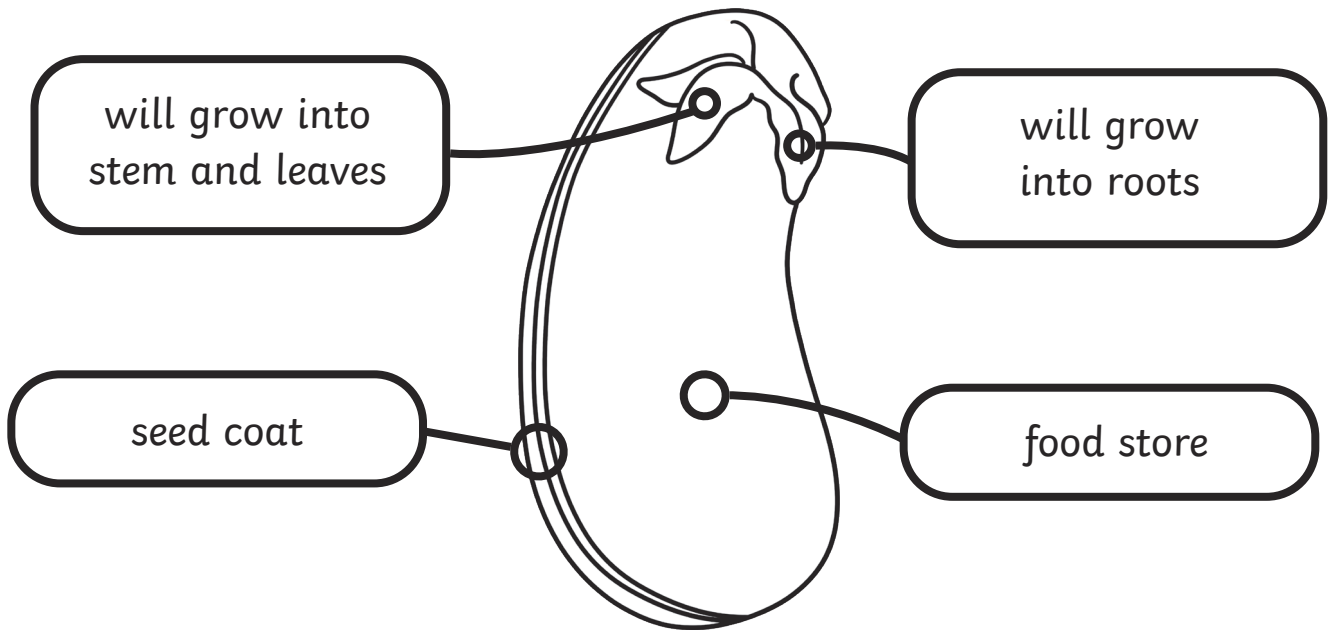
will grow into
stem and leaves

will grow
into roots

food store

Inside a Seed Answers

Draw a diagram of the inside of a seed and label it to show the different parts, using the word bank to help you.



Word Bank

seed coat

will grow into
stem and leaves

will grow
into roots

food store

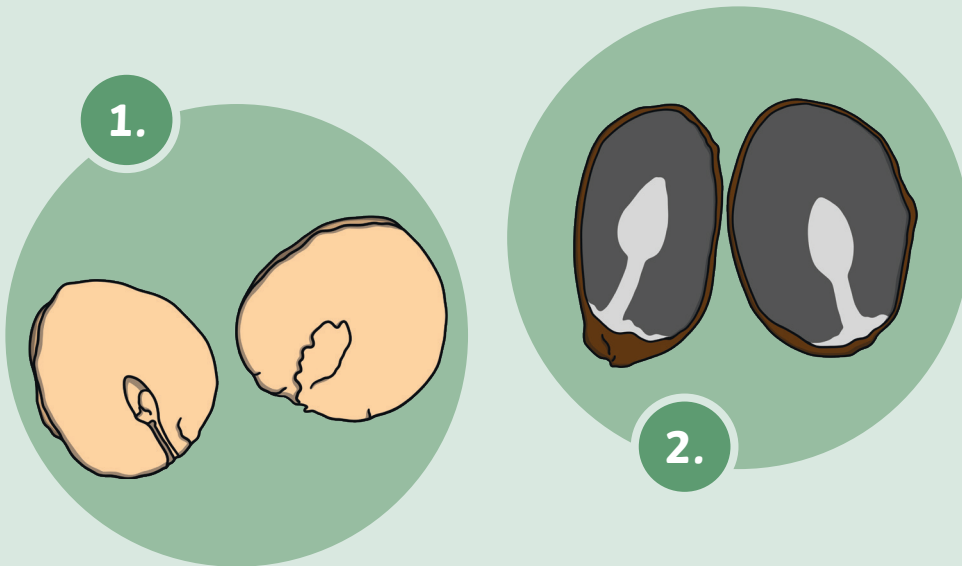
Can you explain what each part of the seed does?

Seed coat: protects the seed from getting damaged.

Food store: feeds the baby plant until it can make its own food.

Baby plant: will grow into the roots and stem of the new plant.

Look inside these two different types of seeds, which have been cut open.

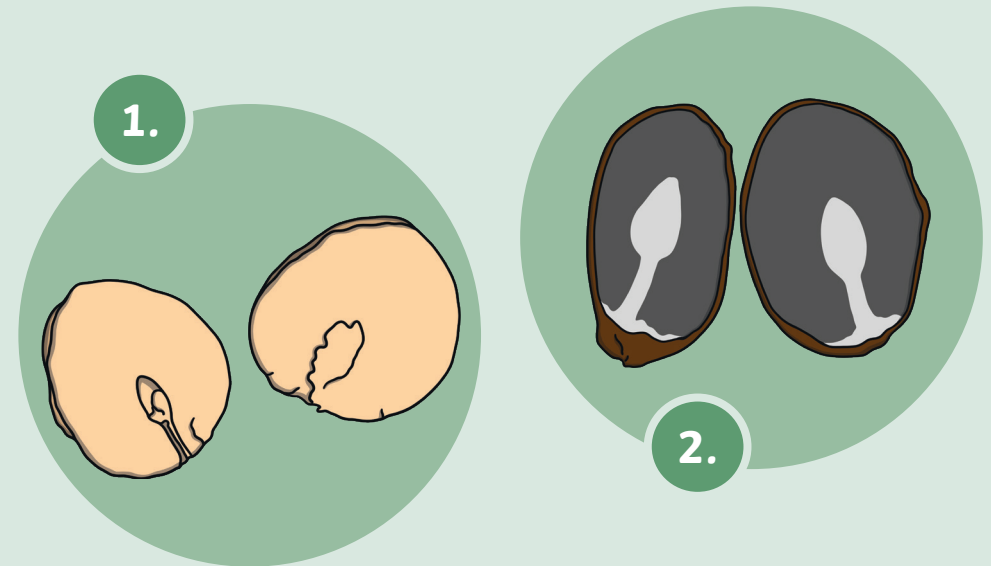


Can you explain what is inside a seed?

Explain how a seed will begin to grow into a plant.

Compare the seeds. How are they similar?
How are they different?

Look inside these two different types of seeds, which have been cut open.



Can you explain what is inside a seed?

Explain how a seed will begin to grow into a plant.

Compare the seeds. How are they similar?
How are they different?

Reasoning Card ②

Can you explain what is inside a seed?

A seed has the baby plant inside and also a store of food to help it to grow.

Explain how a seed will begin to grow into a plant.

When the seed has water, it bursts open and the baby plant begins to grow into a shoot. This is called germination.

Compare the seeds. How are they similar? How are they different?

The seeds have the same type of parts inside them, but they are different sizes, shapes and colours.

Nutrition

Nutrition is what all living things need to grow and stay healthy.

Animals (including humans) get their **nutrition** from eating food.

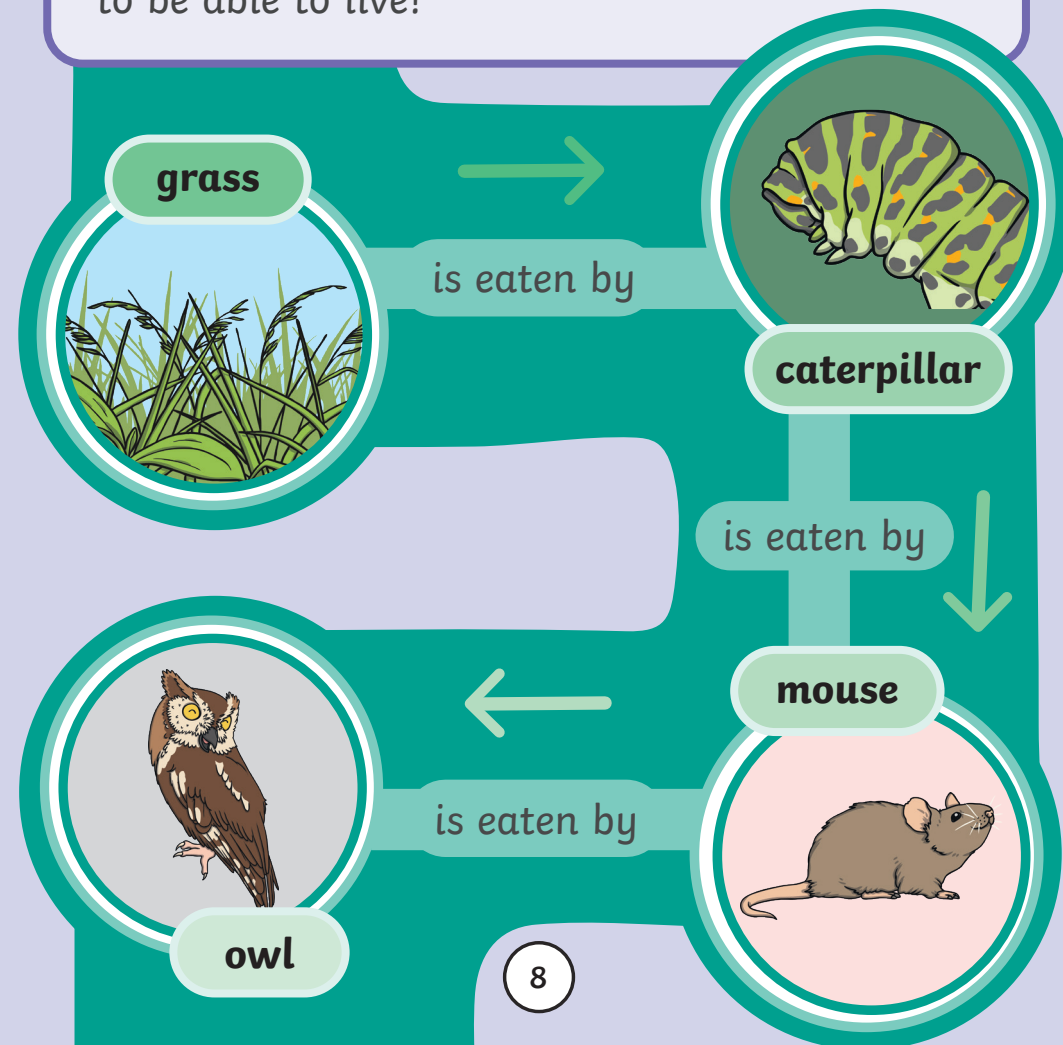
Plants don't need to eat food like we do because they make their own food. Their leaves catch sunlight to help to do this.

Plants can also get some **nutrients** from soil.

7

Many living things depend on plants to survive.

A food chain shows us how animals get the **nutrition** they need. Many food chains start with a green plant, which shows us that even carnivores (meat-eating animals) need plants to be able to live!



8

Waste Removal

Your body makes **waste** after it has used your food and drink to help you to grow and stay strong. How does your body remove the **waste** it doesn't need?

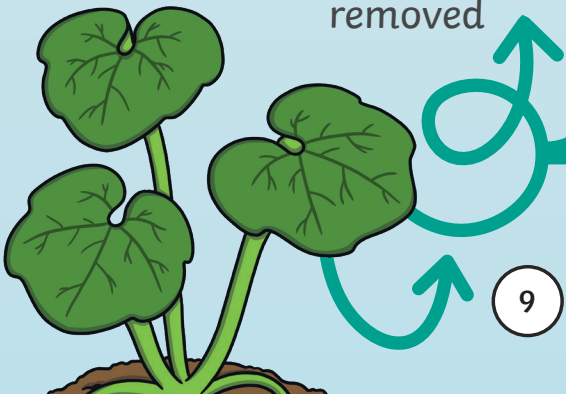
Toilets



We call **waste** removal 'excretion'.

Plants need to remove their **waste** too! But plants don't eat food, so they don't **produce** the same type of **waste** that we do.

gases
removed



9

Instead, plants remove **gases** they don't need. They do this from their leaves.

Reproduction

Reproduce means to make more of something. Humans and other animals can **reproduce** by having babies.

Plants **reproduce** too. Seeds, bulbs and runners are used by different plants to help them to **reproduce**.

daffodil bulbs



dandelion seeds

strawberry
runners



10